

M2M

Mount-Maketu/Maketu-Mount/Mount-Mount



Venue: Pilot Bay, Mount Maunganui



Distance: 32km Iron

Type: W6

Divisions: Open Men, Open Women

Cost: \$300 per team

Event Schedule: Saturday 26th March 2022

8:00am Registration

9:00am Race briefing

11:00am Race Start Women

11:15am Race Start Men

2:30pm Lolo Authentic Turkish Kitchen – 97b Maunganui Road, Mount Maunganui

3:30pm Prizegiving @ High Tide – 91 Willow Street, Tauranga

How to enter:

Your club Rep can enter all waka ama entries online.

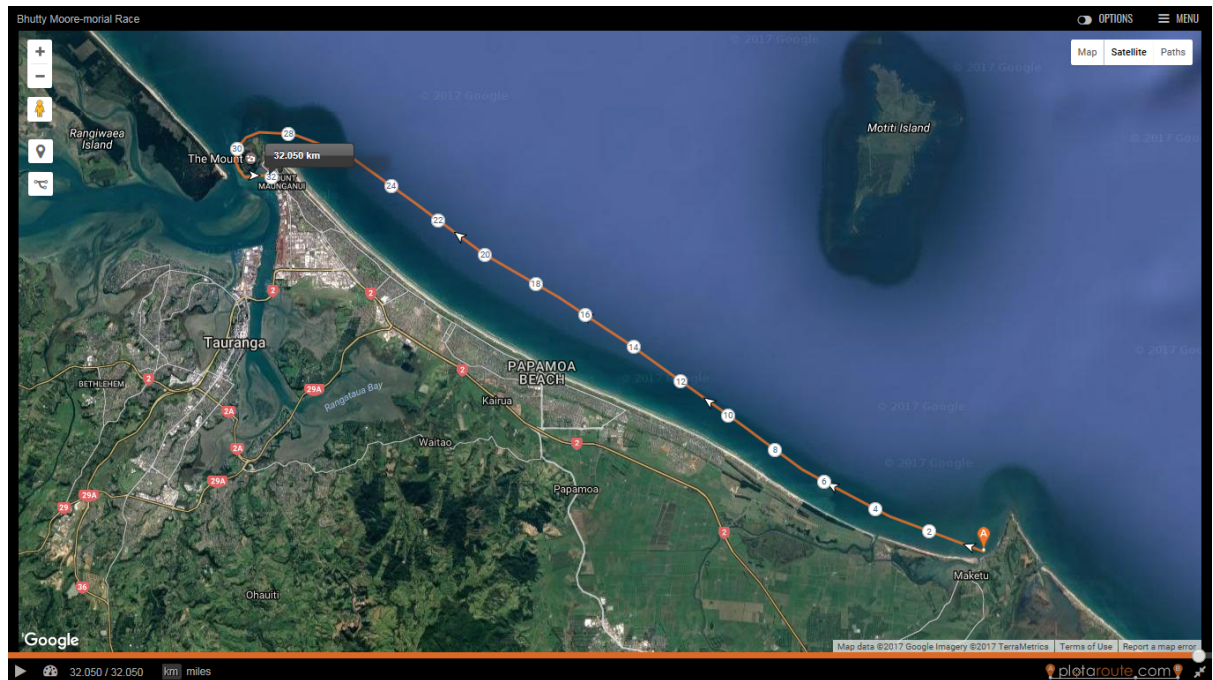
Once entry is in please make Payment to:

Moore-morial event

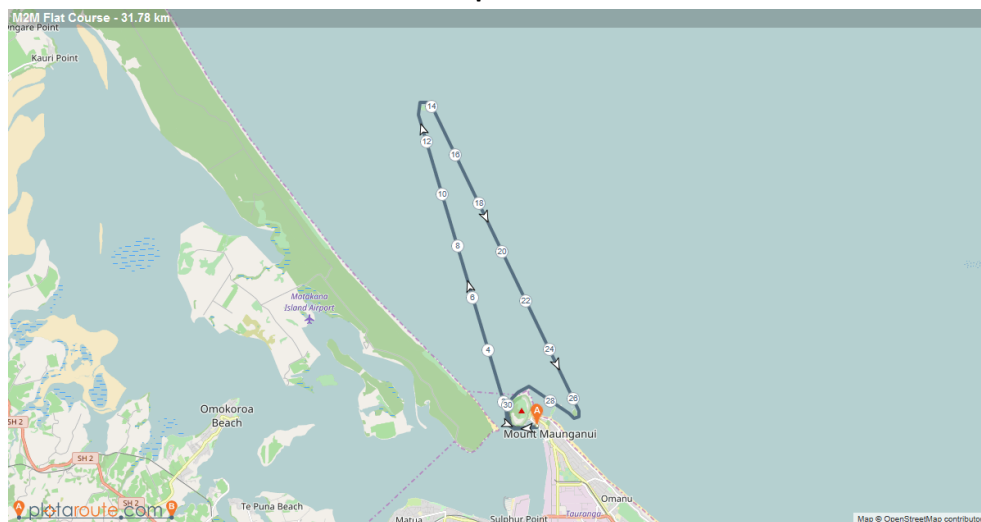
06-0266-0143738-00

Please use your team name, club as reference.

Race Course: Mount 2 Maketu



Back up Race Course: 32km



High Tide: 09:24am

Low Tide: 15:40pm

Compulsory Equipment:

The following equipment must be carried by all waka and will be checked at gear check

- 1 life jacket per paddler (must fit correctly)
- 2 bailers W6,
- 2 Spare paddle W6
- 25m Tow rope W6 attached ready for towing
- Spray skirt
- Cell phone in waterproof bag or VHF Radio on Channel 66

Race Course:

The race course will be decided on Friday the 22nd and all teams will be contacted. If the race start will be at maketu. Then race registration and briefing will also be from maketu.

Entrants:

The race is limited to 20 entries. First in first serve and teams with no proven history will need to provide sufficient results to prove their capability.

Bad weather:

In the case of bad weather making it too dangerous to paddle on the open ocean during the set race day and back up day. Then the race will be moved to the shelter of the harbour from Pilot bay.

